

# MEDCO Manufacturing

*Established in 1984*



IMPORTED AND DISTRIBUTED BY :  
TECHNOMED INDIA PVT LTD  
ADD: H 107 SHIVAJI PARK , WEST PUNJABI  
BAGH , NEW DELHI , 110026  
OFFICE : 01141420555

# Aspiration & Infiltration Systems

## Aspirator IV

The Medco Aspirator IV utilizes two advanced, state of the art positive displacement pumps. These dual headed pumps relieve back pressure to allow each individual pump to pull against the patient so that a deep vacuum is quickly reached and maintained. If one pump should go down, the other three will continue to function independently.

The positive displacement pumps used in MEDCO Aspirators are the quietest on the market. The MEDCO Aspirator IV is made even quieter with 1" shock mounts to eliminate vibration. This, combined with a super quiet muffler and insulation system, make the MEDCO Aspirator IV the QUIETEST Aspirator on the market today! MEDCO MANUFACTURING has been manufacturing Aspirators since 1984 making MEDCO Aspirators the Standard in the industry.



Voltage: 110V or 220V  
Weight: 64lbs  
Dimensions: 17" x 18" x 18"  
Max Vacuum: 29+ inches Hg  
Max Flow: 7.5=CFM  
Sound Level: 29+ -3db  
Pump: 2x2 Piston  
Horsepower: 2/3 hp  
MAINTENANCE FREE, OILLESS

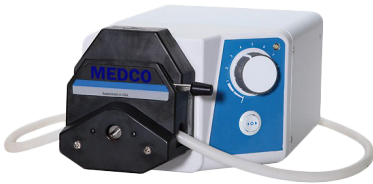
## Autofuse-FR

### Features

- Forward & Reverse Flow Motor for either direction
- Pneumatic foot pedal with ON/OFF flow switch

### Specifications

Voltage: 110V or 220V  
Weight: 11lbs  
Flow Range: 0.42mL/min to 2900 mL/min  
RPM Min: 20rpm  
RPM Max: 600rpm



## Medco Tower IV

The MEDCO Tower IV is an all-in-one Tumescant Pump and Aspirator Tower. Consolidates four separate individual units into one single tower - "OR Space Saver!". 68" Heavy Duty Powder Coated Steel on four locking Casters for easy rolling between OR's. The MEDCO Aspirator IV rests on a lower cradle for easy ON/OFF. Simple to interchange either unit, NO installation required ever. A convenient upper shelf for the MEDCO Autofuse-K Pump and attached adjustable I.V. Pole. The Tower displays a built-in Canister Tandem that will accommodate most Canister Systems, up to 5 total Canisters. The MEDCO Tower IV is assured with a Lifetime Warranty.

MEDCO Tower IV may be purchased separately and will accommodate other standard Liposuction Aspirators or Infiltration Pumps.

*\*Optional second shelf for reciprocating unit.*



### Reusable Canister 2,000ml Part No. C0001

*\*Requires disposable liner*

Without cutoff valve (L0020) (Box of 10)

With cutoff valve (L0025) (Box of 10)



### Disposable Canister 2,000ml (Box of 24) Part No. CAND24

Additional Sizes:

• 1,200ml (Box of 32)

• 3,300ml (Box of 12)



### Medco Filter (Box of 6) Part no. F006

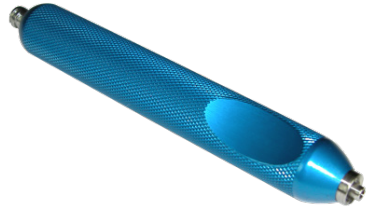
Designed specifically for high flow aspirations, this hepa filter could save you from a costly aspirator breakdown. The filter has 144 sq./in. of effective filtration area, and is not a paper filter compared to others. This is a 0.3 micron filter and has a D.O.P. Rating of 99.975%, which meets or exceeds industry standards.

# Infiltration Accessories

## Standard Infusion Handle

#TUMHAN-NC

Aluminum Infusion Handle with NO Control, Stainless Steel Luer Lock.  
3/4" Diameter, 5.5" Length, 3.5oz



## Infusion Handle with On/Off Control Luer Lock Connect

#TUMHANLL-BLUE

The on/off valve workings have been improved by sealing systems that will better withstand the high autoclave temperatures. This improved handle allows for fingertip control during the infusion process.  
3/4" Diameter, 5.5" Length, 3.5oz



## Luer Lock Infusion Needles

For rapid infusion of tumescent fluid  
Standard diameters: 10, 12, 14, 16, 18 gauge  
Standard lengths: 15, 25, 30cm

### Garden Spray Infiltration Needle

#BN

This cannula is used specifically for the infusion of tumescent solution. Configuration of the holes allow for even distribution of the fluid.



### Dual Garden Spray Infiltration Needle

#BND

The Dual Spray has the same hole configuration as the Garden Spray, just doubled.

### Super Spray Infiltration Needle

#SS

The super spray is designed to maximize liposuction efficiency, with multiple round holes arranged in a helical pattern along the distal end of the cannula.



*\*Custom Needles Always Available*

# Tubing

## Aspirator Tubing #B1540 (Box of 10)



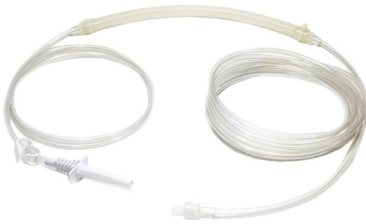
Our super soft liposuction tubing.  
10'. Latex Free.

## Aspiration Tubing w/Variable O.D. #M-1540 (Box of 10)



Compare to MicroAire® (PAL-900)  
Premium suction tubing with  
variable O.D. 12', Latex Free.

## Single Spike Infusion Tubing #AFTU-K (Box of 10)



With silicone sleeve for infusion pumps.  
144" length, Latex Free.

## Dual Spike Infusion Tubing #AFTU-KY (Box of 10)



## Single Spike, Large Bore #TUM-10 (Box of 10)



For manual and pressure cuff systems.  
Without silicone sleeve, 120" length.  
Latex Free.

## Dual Spike, Large Bore #TUM-Y (Box of 10)



# Customize Your Own Cannula!

## Mix & Match

All Cannula Same Low Price!

### Begin Your Design

- 1 Specify Cannula Style**  
Choose—#CA1, #CA2-QS, #CA2-QD,  
#CA2-QL, #CA2-LL or #CA3-TMY
- 2 Specify Cannula Tip Pattern**  
Choose a Tip Pattern from Page 7
- 3 Specify Cannula Diameter (mm)**  
Choose a diameter size from Millimeter Chart.  
Available Sizes: 1mm-8mm  
Standard Sizes: 2mm, 3mm, 4mm, 5mm
- 4 Specify Cannula Length (cm)**  
Choose a length size; not including handle or hub.  
Available Sizes: 1cm-cm of your choice  
Standard Sizes: 15cm, 21cm, 23cm, 26cm, 30cm, 32cm
- 5 Specify Curve Preference**  
Choose a Curve Preference from Curve Preference Chart.  
Available Curves: Convex, Straight, Concave, "S" Tip or Custom.  
Standard Curve: Straight

### Cannula & Handle Styles

#### #CA1-One Piece Cannula w/Swivel Barb

Stainless Steel, Aluminum Handle  
Handle: 5.9" length, 1" diameter

*\*Customer Favorite*



#### #CA2-QS - Two Piece Cannula, Quick Screw

Stainless Steel

#### #CA2-QSH - Quick Screw Handle (sold separately)

Delrin/Autoclavable  
5.2" length, 2oz.

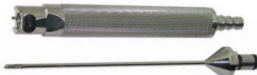


#### #CA2-QD - Two Piece Cannula, Quick Disconnect

Stainless Steel

#### #CA2-QDH - Quick Disconnect Handle (sold separately)

Stainless Steel  
6.65" length, 7oz.



#### #CA2-LL - Two Piece Cannula, Luer Lock

Stainless Steel

#### #CA2-LLH - Luer Lock Handle (sold separately)

Aluminum w/Stainless Steel Luer Lock  
1" diameter, 6.85" length, 4oz.



#### #CA3-TMY - Two Piece Cannula, Toomey 60cc

Stainless Steel

#### #CA3-TMYH - Toomey Handle (sold separately)

Delrin/Autoclavable  
7.1" length, 3.5oz.

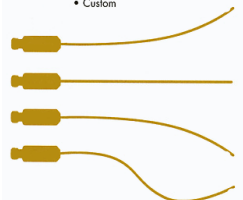


### Millimeter Chart

1.2mm	•	18g
1.4mm	•	17g
1.6mm	•	16g
2mm	•	14g
2.7mm	•	12g
3mm	•	11g
3.4mm	•	10g
4mm	•	8g
5mm	•	6g
6mm	•	
7mm	•	
8mm	•	

### Curve Preference Chart

- Convex Curve
- Straight
- Concave Curve
- "S" Tip
- Custom



## Tip Styles

To order, specify tip, diameter (mm), length (cm), and handle system.



### #ASPII (Aspirator II)

Two port radial. Good for all applications. Less Aggressive than Aspirator III.



### ASPIII (Aspirator III)

Three Ports in a triangular pattern. Good for all applications. *\*Customer Favorite*



### BASK (Basket)

Flare Mercedes facilitates breakdown of fibrous tissue prior to aspiration, increasing speed and efficiency in a wide range of procedures. Most aggressive. *\*Customer Favorite*



### CC (Candy Cane)

Features three 45 degree slots in a spiral pattern as shown. Aggressive.



### #COB (Cobra)

Slightly sharpened "V" shaped with two side ports. Lightly aggressive.



### #VD ("V" Dissector)

Sharp "V" used solely to breakdown fibrous tissue before aspiration. Very aggressive.



### #LV (Las Vegas)

Similar to Aspirator III with a single distal port with two proximal ports. Less aggressive at the tip.



### #MER (Mercedes)

Featuring three ports in a circumferential pattern near the distal tip of the shaft. *\*Customer Favorite*



### #SPAT (Spatula)

Named this way because of its flattened profile. The spatula cannula is ideal for cervical and facial procedures. Least Aggressive. *\*Customer Favorite*



### #SPAT2 (Spatula 2)

Two port spatula. Less Aggressive.



### #SPAT3 (Spatula 3)

Three port spatula. Less Aggressive.



### #STD (Standard)

The standard single slot. Minimal Aggressiveness.



### #STD2 (Standard 2)

This highly efficient two slot cannula tip is widely used in the face and neck for sculpting and helping to provoke skin retraction. Minimal to Standard Aggressiveness.



### #STD3 (Standard 3)

Three slot cannula tip. Minimal to Standard Aggressiveness.



### #WDG (Wedge)

Weged tip with one slot, two big holes, and two small holes. Standard Aggressiveness.

*\*CUSTOM CANNULA ALWAYS AVAILABLE*

# Autologous Fat Transfer

## Toomey Cannula #CA3-TMY

The standard stainless steel Toomey base built to last long. Fits MONOJECT 60cc Toomey Syringes.

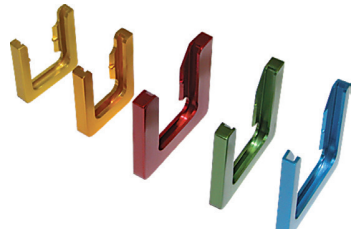


1,200cc Glass Fat Collection Jar, reusable, autoclavable #M640

Bottle Top 3/8" I.D., reusable, autoclavable #M641



Snapper Lock for B-D syringe-10cc #SN010  
Snapper Lock for B-D syringe-20cc #SN020  
Snapper Lock for B-D syringe-30cc #SN030  
Snapper Lock for Monoject syringe-60cc #SN060



Horseshoe Lock for B-D syringe-10cc #HSL010  
Horseshoe Lock for B-D syringe-20cc #HSL020  
Horseshoe Lock for B-D syringe-30cc #HSL030  
Horseshoe Lock for Monoject syringe-60cc #HSL060



Toomey to Luer Lock Syringe #T60SSLL



Micro Injection Needle-Style 1 #MIN1



Micro Injection Needle-Style 2 #MIN2



Micro Injection Needle-Style 3 #MIN3



Luer Lock transfer to Luer Lock #LLTLL



Micro Injection Needle-"V"-Dissector #MIN"V"



**MICRO-INJECTION GUN SETS – For micro tissue injections with extra-fine serrations for precise accuracy.**

The standard microinjection system in use today. Stainless steel construction assures ease of use precision accuracy. Designed for use with standard BD syringes. It is three times smaller per squeeze compared to the previous design.

**Injection Gun Set  
3CC #IGSET-3CC**

Stainless Steel, for 3cc B-D syringe #309585, .328cc per squeeze



**Injection Gun Set  
5CC #IGSET-5CC**

Stainless Steel, for 5cc B-D syringe #309603, .623cc per squeeze



**Injection Gun Set  
10CC #IGSET-10CC**

Stainless Steel, for 10cc B-D syringe #309604, .885cc per squeeze



**Injection Gun Set  
20CC #IGSET-20CC**

Stainless Steel, for 20cc B-D syringe #309617, 1.51cc per squeeze



**Injection Gun Set  
30CC #IGSET-30CC**

Stainless Steel, for 30cc B-D syringe, 1.98cc per squeeze



**Injection Gun Set  
60CC #IGSET-60CC**

Stainless Steel, for 60cc Monoject Toomey syringe #560265, 1.98cc per squeeze



**#SR 10, 20**

Durable, Autoclavable Epoxy Wire Syringe Rack – 10cc or 20cc, 72 tubes.



**#SR 30, 50, 60**

Durable, Autoclavable Epoxy Wire Syringe Rack – 30cc, 50cc or 60cc, 16 tubes.



**SUPER SPIN CENTRIFUGE #MED462**

The SuperSpin Centrifuge spins at 4000 RPM, insuring a clean, more complete separation of cellular components, thus yielding a superior specimen. The SuperSpin centrifuge is extremely quiet for a better working environment. It features a maintenance-free brushless motor and has a safety lid latch, timer, on/off switch as well as other features

- 6 place rotor for 2-10 ml tubes
- variable speed control
- quiet running
- easy clean exterior
- 0-30 minute timer with signal
- latching lid window with safety switch
- front panel LED light

